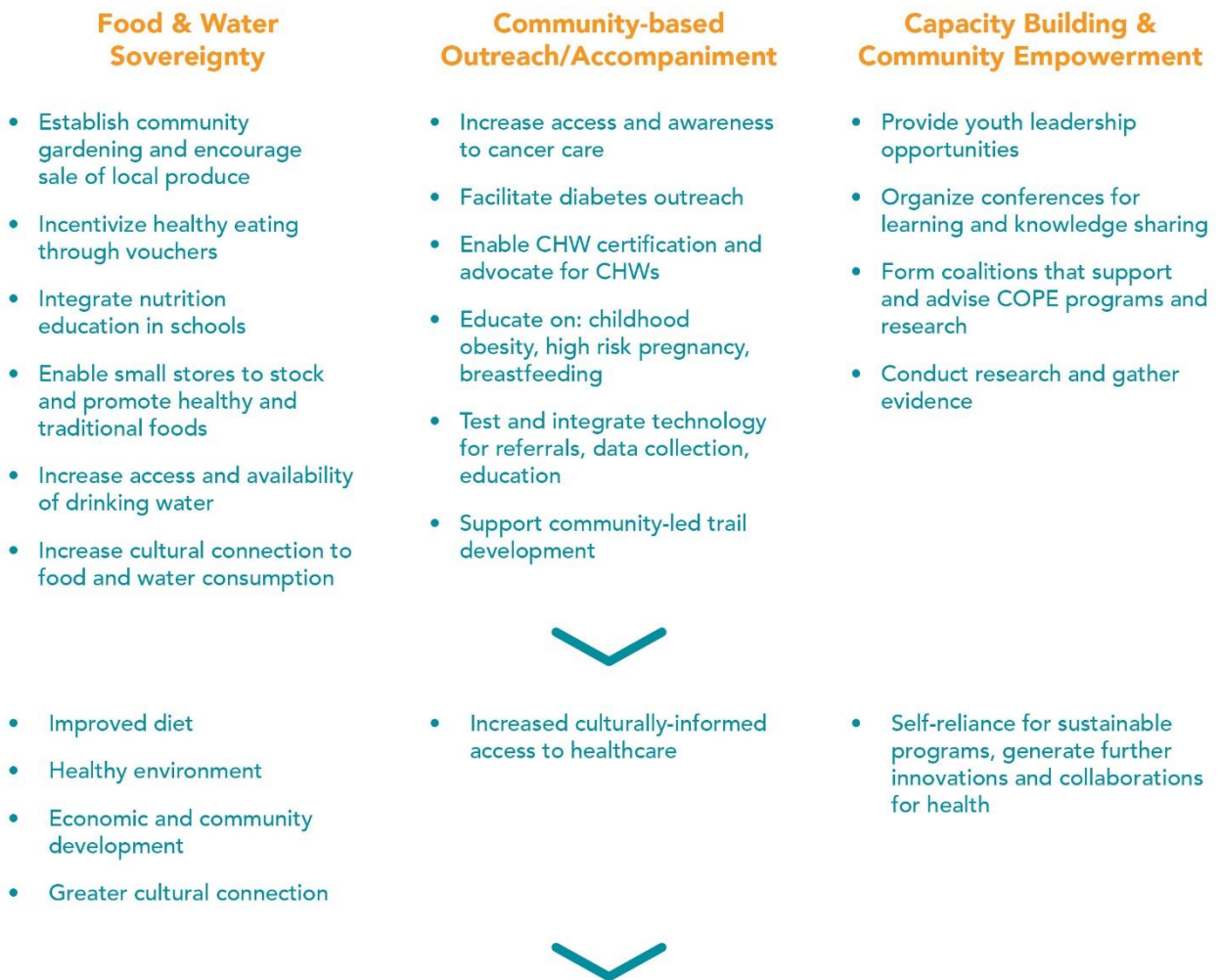


COPE Theory of Change

We believe that the power to overturn long-standing, historical health inequalities lies inherently in Native communities themselves. By investing in existing community resources and aligning our work with the vision of tribal leadership, we hope to help catalyze this transformation within our lifetime.

COPE strives to promote healthy, prosperous, and empowered Native communities through three collaborative approaches: Achieving food and water sovereignty; local capacity building and system-level partnerships; and robust, community-based outreach. We conduct several activities under each approach, aiming for outcomes that will ultimately lead to health equity in Native communities. Community members and partnerships guide us in identifying desired outcomes and designing appropriate activities. Our programs are evaluated with respect to three major outcomes: impact, empowerment, and equity.



Health Equity in Native Communities